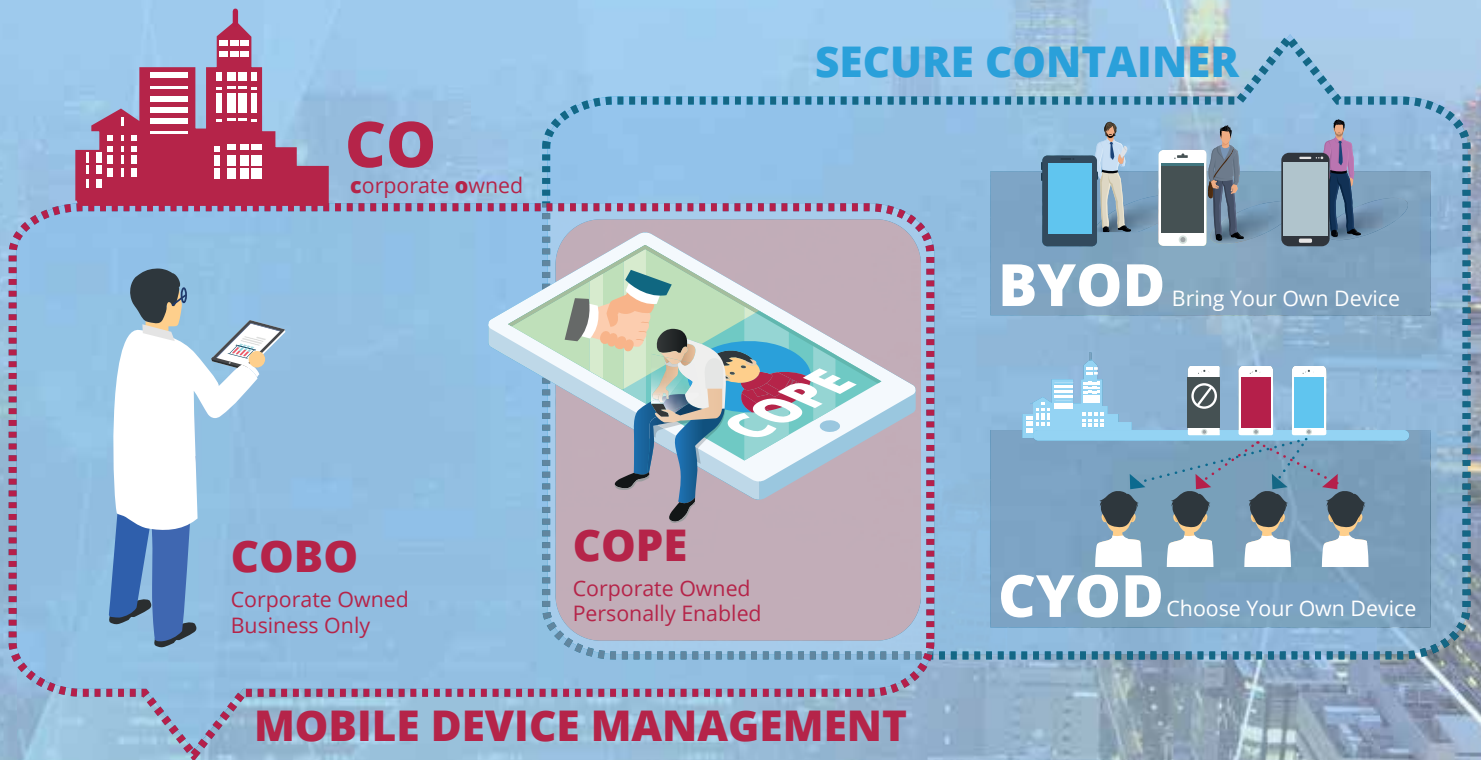




# SOTI MobiControl and SecureContainer – DME



With SOTI MobiControl and SecureContainer - DME, companies can implement any corporate mobility policy governing the use and security of mobile devices within the corporate network. SOTI MobiControl provides key EMM functionality securing the device, its applications and content. The Soliton SecureContainer - DME adds additional security by encrypting corporate email, PIM and files inside the secure container. The integration of SOTI MobiControl and SecureContainer - DME enables companies to protect and control both the mobile device and the company data residing on it.

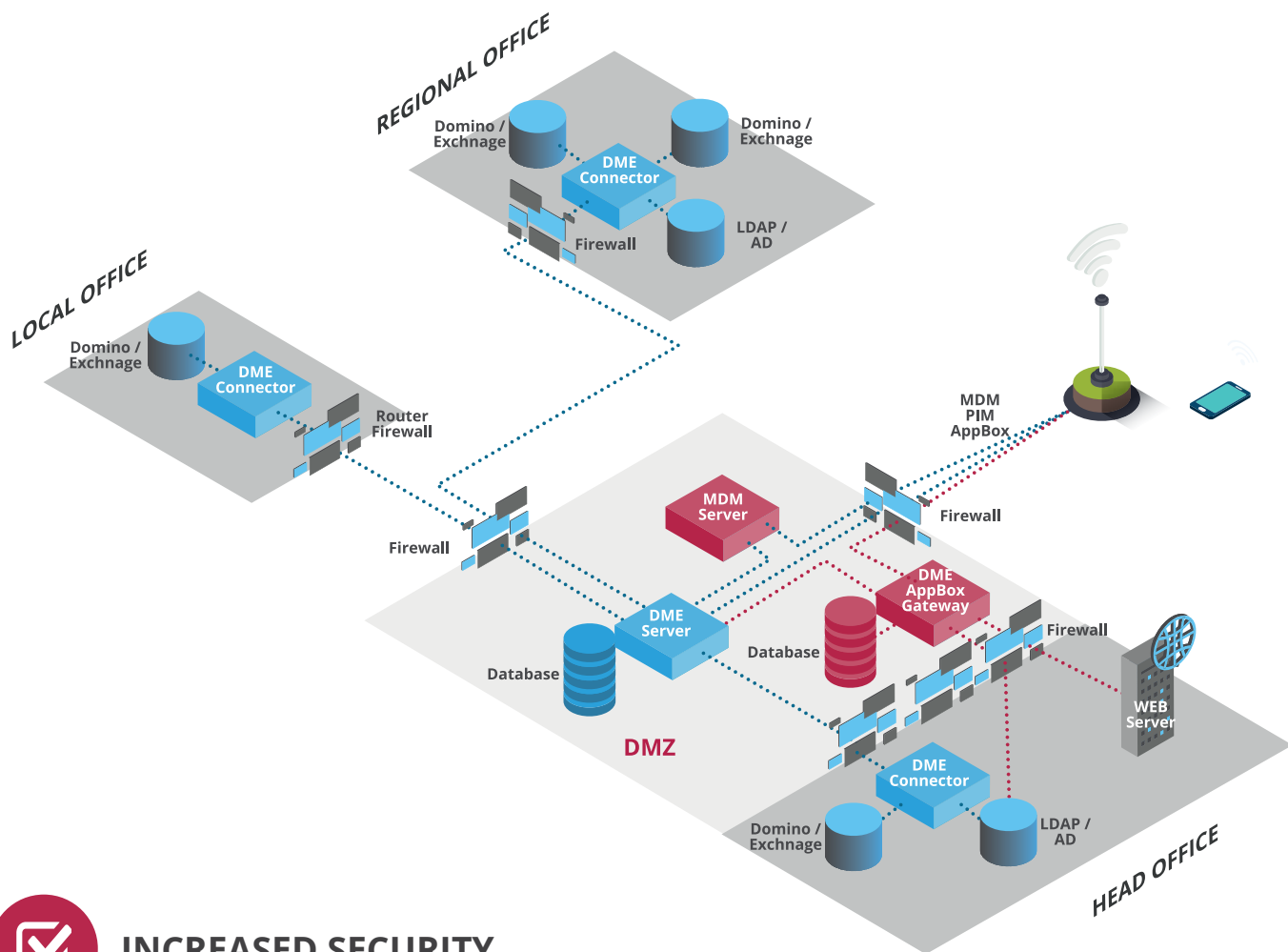
## FEATURES AND BENEFITS

The possibility to integrate SOTI MobiControl and Soliton SecureContainer - DME supports a number of key features, including:



### EASY DEPLOYMENT AND CONFIGURATION

Soliton SecureContainer - DME (DME) can be deployed and pre-configured through the SOTI MC Application Catalog on iOS and Android devices. With existing AD / LDAP integration, the configuration of the DME client can be done directly via SOTI MC (compliant to AppConfig.org). The first time the DME client is started, the user must only enter his password from his own domain. The MAM engine of SOTI MobiControl provides the IT administrator the possibility to push out the secure container as a mandatory or optional app for the end-user.



## INCREASED SECURITY

Each time a connection is established, the DME server checks the status of the terminal via the SOTI MobiControl API.

and the company data. DME prevents unauthorized usage in case the device is lost, stolen, hacked or compromised. The DME always requests for an additional authentication.



## FLEXIBLE INFRASTRUCTURE

Regardless the complexity of the current infrastructure the secure DME gateway connects without any problems to the different message and collaboration systems.



## COMPLIANCE CHECKER

SOTI MobiControl enables compliance and policy checks. It detects exceptional events triggered by i.e. status change and sends an alert to the administrator and moves the device to a quarantine.



## ENCRYPTION OF DATA AND DEVICE

DME acts independently from the device encryption features and encrypts the data in the secure container. SOTI MobiControl activates the encryption embedded in the mobile device and secures the applications and the content residing on the device. Integrating DME and SOTI MobiControl enables companies to encrypt both the device



## EMM FEATURES

With SOTI MobiControl and DME the administrator has full control of the device and the data. In the event of a lost, stolen, jail broken or rooted device, the administrator has different options to control the device: block DME, wipe or delete the device and its applications, including DME.